

KVAC59PE / KVAC59PE/P

Kerrick Shockproof Vacuum

Industrial two motor vacuum cleaner - 90L



High-impact, corrosion-proof wet and dry vacuum designed for industrial use.

- Powerful 2 x 1000 watt motors
- 90 litre tank capacity with practical drain hose
- Large rear wheels and front castors for easier manoeuvring
- Large rear handle for enhanced mobility
- One year commercial warranty
- Standard models include 2.5m flexible hose, chrome extension set, dry floor tool, squeegee tool, crevice tool, round brush, textile filter
- Pump out option available (KVAC59PE/P), with submersible pump for transfer of greater volume of waste water. Includes flexible 2.5m hose, chrome extension set, squeegee tool

Technical specifications

Description	Unit	KVAC59PE
Part no.		KVAC59PE KVAC59PE/P
Input	Volts	240
Rated Power	Watts	2 x 1000
Airflow	L/min.	6000
Vacuum	mbar	190
Sound Pressure Level	dB(A)	65
Tank Capacity	L	90
Dimensions	mm (HxWxD)	930x480x620
Hose Length	m	2.5
Cable Length	m	10
Weight	kg	23(PE)/ 29(PE/P)
Accessory Diameter	mm	50

Specifications and details are subject to change without prior notice.

Accessories

VP6010500 - Flexible hose 2.5m
VP2511600 - Chrome extension
VP6010000 - Dry floor tool
VP6010011 - Squeegee tool
VP2511610 - Crevice tool
VP2511615 - Round brush
VP5830022 - 500mm accessory set - 2.5m flexible hose, chrome extension, dry floor tool, squeegee tool, round brush, crevice tool

Optional Extras

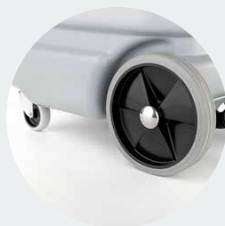
VP6830000 Textile filter
VP2512000 PVC extension tube 500mm
VP6830030 Paper filter bag with cap 19L
VP3001220 Nylon filter
VP2512610 Carpet tool
VP6200150 Anti-foam device
VP2512744 Hepa filter
VP2512743 Cartridge filter



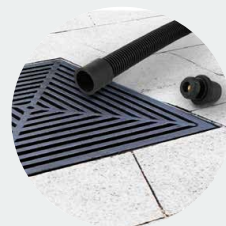
Ergonomic handle



90L shock-proof container



Front castor wheels, rear large wheels



Drain hose



Motor head quick release