

SERVICE MANUAL

VU200



NILFISK

Preface

In this manual you will find the essentials you need to know when repairing dry vacuum cleaners of the VU200 series.

When carrying out repairs, make sure you have a suitable workbench or the like with the necessary power supply available.

If you determine an error in operation, be sure to refer the customer to the user manual.

A fault in the equipment can have a number of causes.

Use the illustrated spare parts lists for your repairs. These show you the location of the individual parts and the sequence in which they are assembled.

Read the technical information sheets. These will tell you about any technical modifications made after publication of this repair manual.

Technical information sheets are a supplement to the spare parts list until a follow-on publication.

Repair manuals and technical information sheets should be available at the site where repairs are carried out.

It is not permitted to give the repair manuals to third parties.

Use original Nilfisk spare parts only!

Table of Content

A	Safety instructions	P. 4—6
B	Technical data	P. 7
C	Construction	P. 8—9
D	N/A	
E	N/A	
F	Service / Repair	P. 10—11
G	N/A	
H	Wiring diagrams	P. 12
I	N/A	

For your own safety.



Repairs should only be made by someone who has received proper instructions for the job or who is a qualified electrician

WARNING:

The upper section of the machine contains live components. Contact with live components leads to serious or even fatal injuries.

Always disconnect the mains plug before disassembly.

Observe national safety directives and regulations for the electrical engineering trade, in particular:

2006/42/EC: EN 603351:2012+A11:2014+A13:2017+A1:2019+A14:2019+A2:2019+A15:2021+A16:2023. EN 60335-2-69:2012

2014/30/EU:

EN 55014-1:2021

EN 55014-2:2021

EN 61000-3-2:2019+A1:2021

EN 61000-3-3:2013+A1:2019+A2:2021

2011/65/EU: EN 63000:2018

2009/125/EC: EN 60312-1:2017

666/2013/EU: EN 60335-2-69:2012

DIN VDE 105 part 1:
operation of electrical
power installations.

DIN VDE 0701/0702:
repair, modification and
testing of electrical installations.

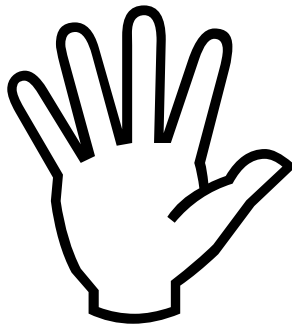
Before starting the equipment, be sure to read the accompanying user manual, and keep it close as reference.

The equipment should only be used by persons who have been instructed in its use and are authorized to do so.

Symbols used to mark instructions



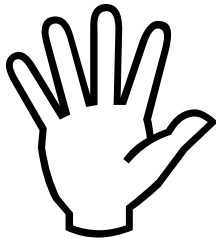
Safety instructions marked with this symbol in this manual must be observed to prevent danger to persons.



This symbol is used to mark safety instructions that must be observed to prevent damage to the equipment and degradation of performance.



This symbol indicates tips and instructions to simplify work and to ensure safe operation.



ESD (electrostatic discharge)

Observe the following ESD precautions before any repair of or near electronic parts:

- Touch the protective conductor to discharge your own body.
- Possibly wear an anti-static wrist strap.
- Use a conducting floor or tabletop.
- Never touch a circuit board or electronic components - always hold them by the plastic or insulation.
- Transport electronic parts in conductive packaging (e.g. special ESD packages).

WARNING.

Do not use the machine without filters properly fitted.

Do not use when charging.

The machine must not be used for the suction of water or other liquids.

Do not pick up sharp objects such as needles or pieces of glass.

Do not pick up anything that is burning or smoking such as cigarettes, matches or hot ashes.

Do not handle the machine with wet hands.

Store the machine indoors and in a dry environment.

Clean the machine surface with a dry cloth or a damp cloth with a little cleaning agent.

Do not use the machine if it appears faulty. Have the machine inspected by an authorized service center if the machine has been dropped, damaged, left outdoors or has been exposed to water.

No changes or modification to the mechanical or electrical safety devices should be made.

Turn off the machine before starting dust container emptying.

This appliance can be used by children aged from 8 years and above and persons with reduced physical, sensory, or mental capabilities or lack of experience and knowledge if they have been given supervision or instruction concerning use of the appliance in a safe way and understand the hazards involved. Cleaning and user maintenance shall not be made by children without supervision. Children should not play with the appliance.

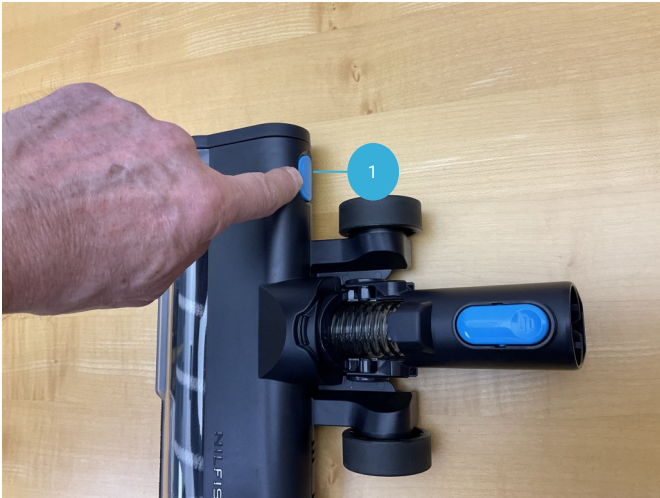
	Unit	VU200 Vacuum Cleaner
Length—Width—Height	MM	1255—255—226
Container Capacity	L	0.8
Max Power	W	550
Input Voltage	V	100~240
Output Voltage	V	29.6
Charging Time	Min	110
Battery Capacity	mAh	2500
Battery Power	W	32Max
Battery Run Time ECO	Min	Up to 60
Battery Run Time Normal	Min	Up to 25
Battery Run Time Turbo	Min	Up to 12



VU200 overview



VU200 overview—machine modules



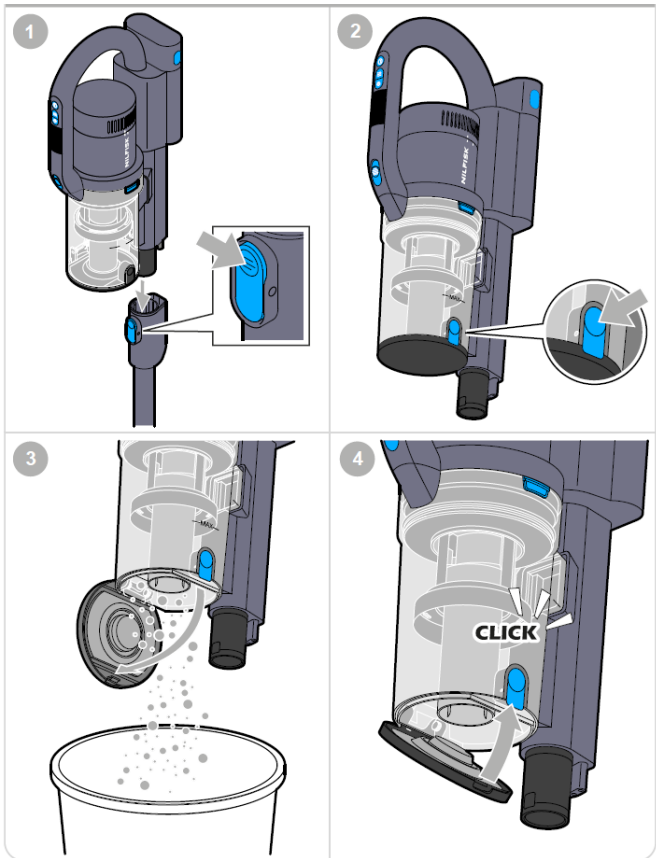
Press on the blue latch (pos. 1)



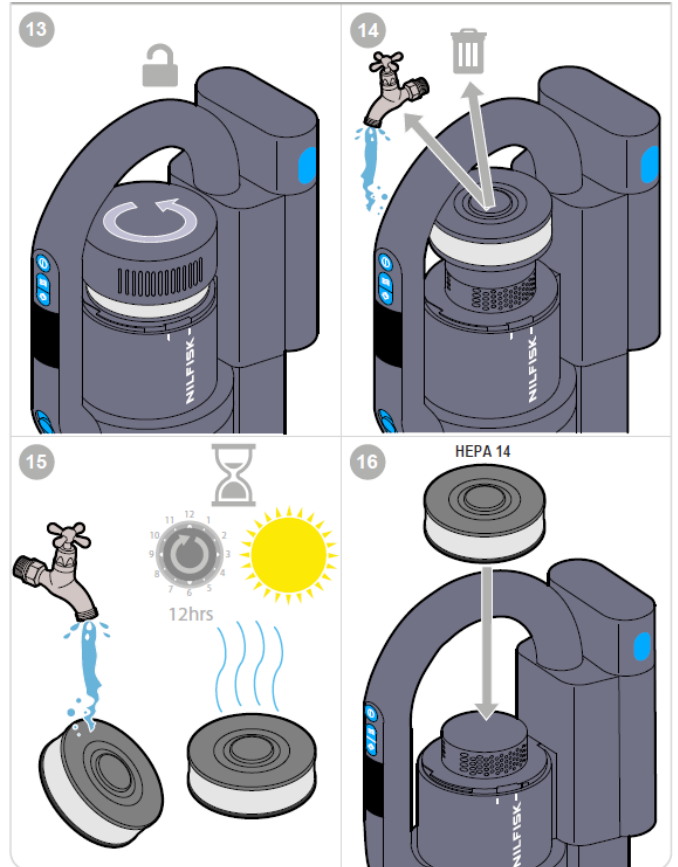
Push up the end cover (pos. 2) for rotating brush.



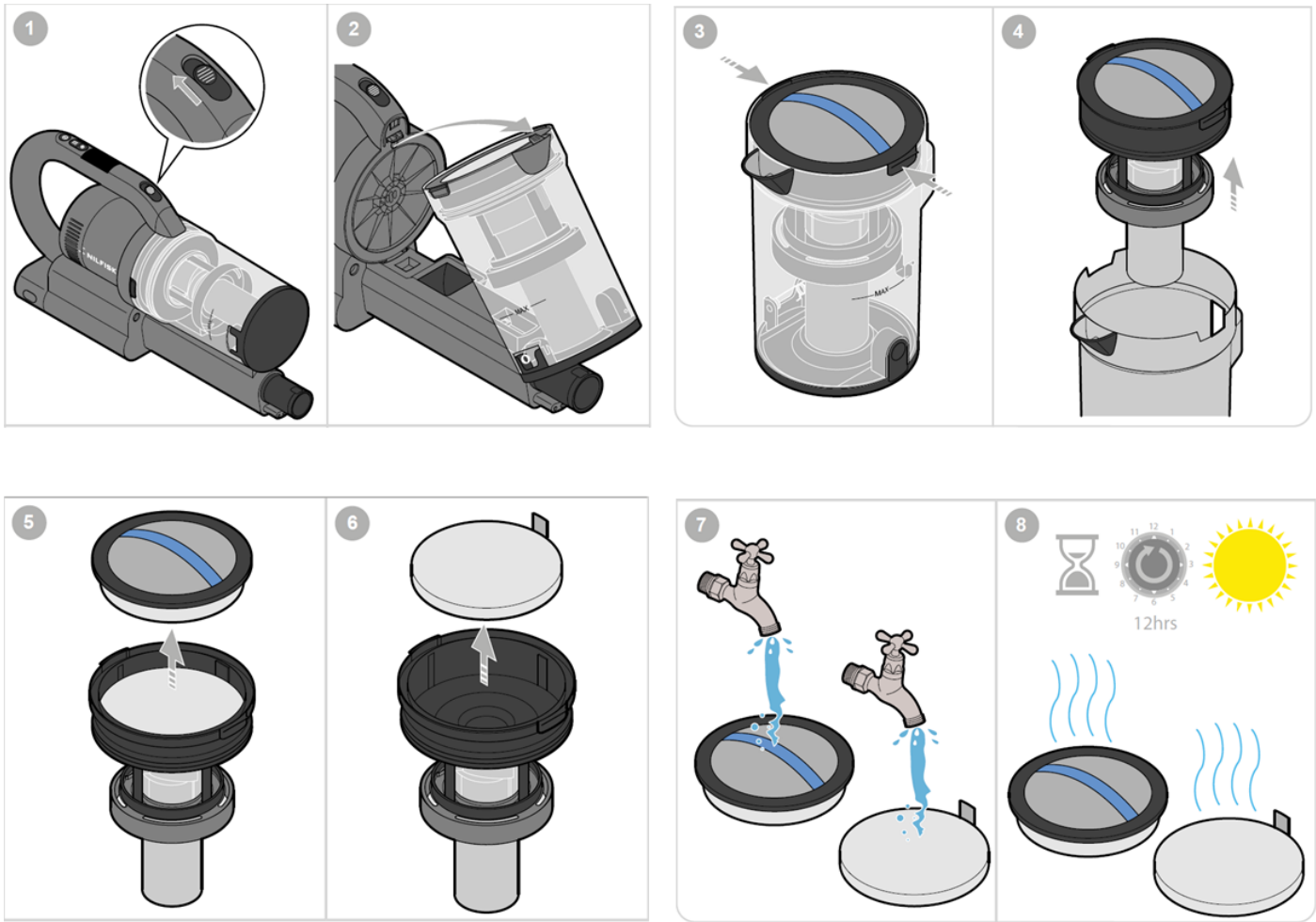
Pull out the brush (pos. 3)



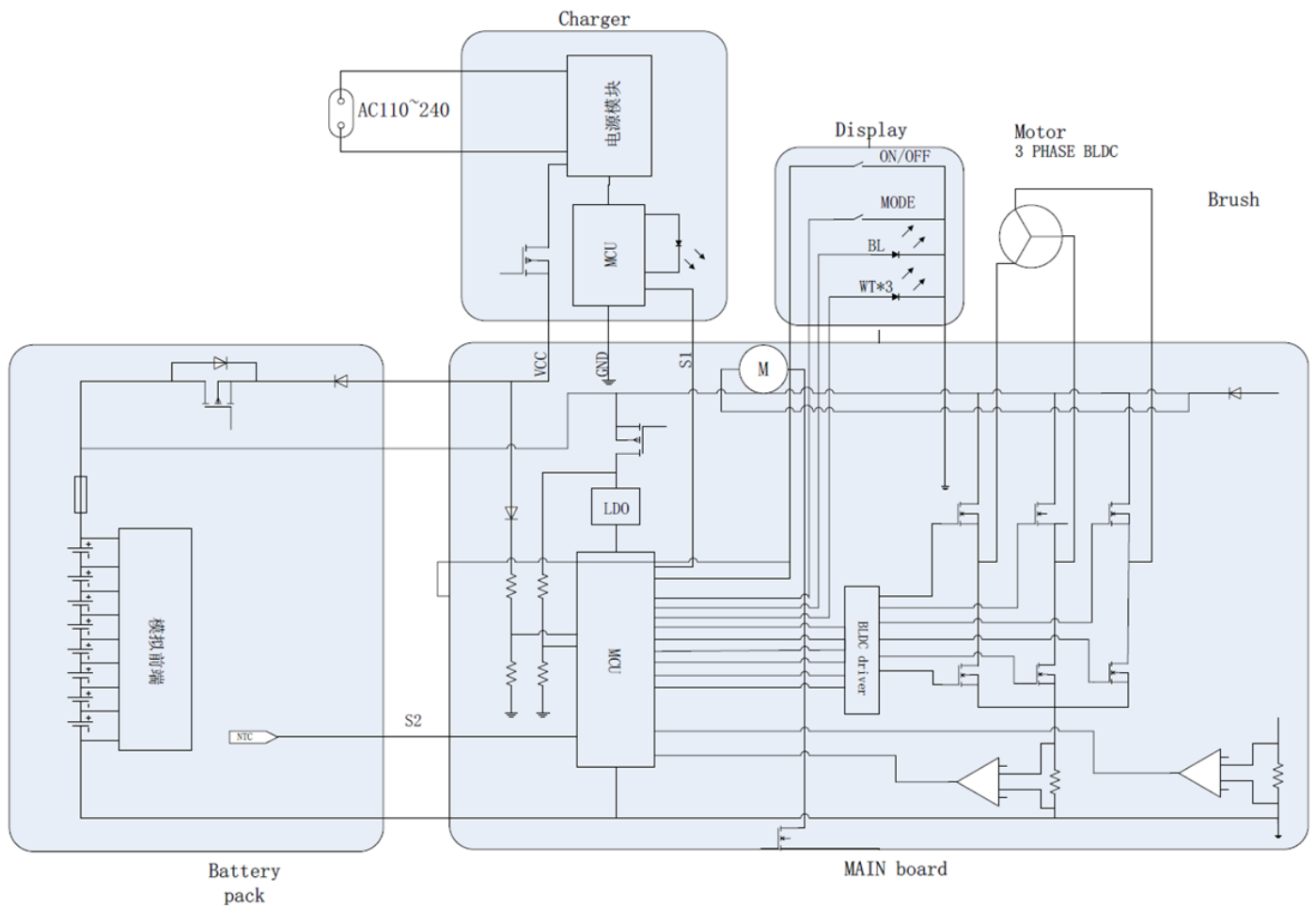
Empty container for debris



Dismount HEPA filter for cleaning or replacement



Filter dismounting for cleaning or replacement



Notes



Nilfisk A/S
Industrivej 1
9650 Hadsund
Denmark

www.nilfisk.com

NILFISK